



55 John Street Petersham NSW

4  1 

Evocative period character and appeal have been magically merged with sensational contemporary style in this captivating bay fronted Victorian residence. The result is "Trethill" an enticing family domain just metres from Petersham's thriving café scene and a host of public transport options. This imposing period home retains a profusion of period features with an elegant leadlight entry door welcoming you to an impressive interior and an impressive hallway opening to formal lounge & dining rooms featuring glowing parquetry floors and exquisite marble fireplaces. Additional accommodation includes four double bedrooms (built-in) and period style bathroom with roll topped bath and separate frameless glass shower. The modern light-filled rear extension incorporates a well-appointed timber topped kitchen with stainless steel appliances and a sundrenched casual living/ dining area overlooking an impressive landscaped mature rear garden. This distinguished home boasts an array of additional features including elaborate plaster cornices, marble & timber fireplaces, delicate leadlight glass, pressed metal dados, plantation shutters, air conditioning, 1,500 litre rainwater tank, polished Kauri & parquetry floors, separate utility room with second WC and potential off street parking

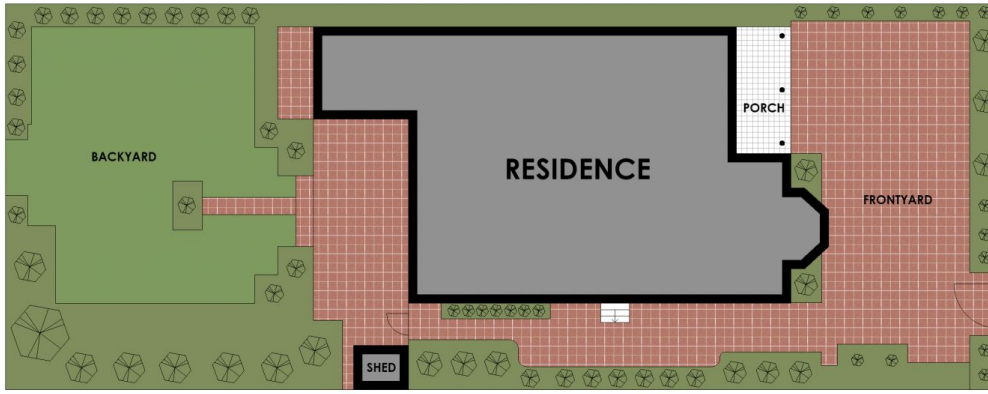
Price : \$ 3,001,000
Land Size : 408 sqm
View : <https://www.planetproperties.com.au/sale/nsw/inner-west/petersham/residential/house/7364972>



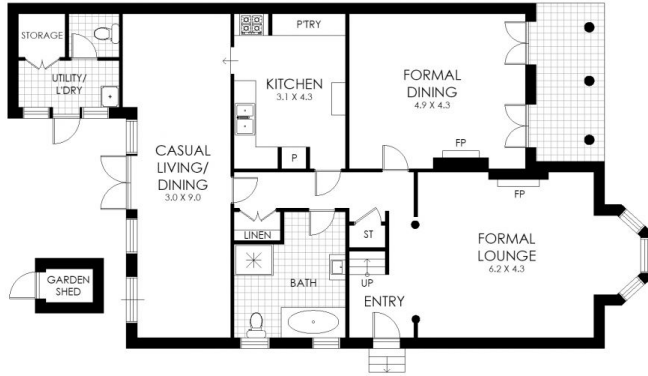
Rosalie Gordon
0416198261



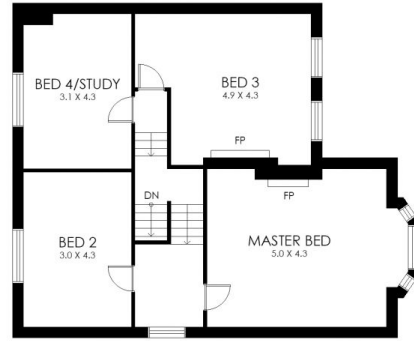
Mark Gordon
02 9747 8888



SITE PLAN



GROUND LEVEL



UPPER LEVEL



55 John Street, Petersham

WARNING: DISCLAIMER This information is not to be relied upon. It is strictly used for marketing and illustration purposes only. All measurements are approximate. Not to scale. No liability accepted. You must rely on your own inquiries and seek advice from your solicitor. Floor plan by cnkplan@cnkplan.com.au/ www.cnkplan.com.au