



6/70 Ewart Street Marrickville NSW

2 1

Beyond an elegant entrance hallway, perfectly positioned on the first floor of a tightly held historic boutique block of eight this light filled character apartment is sure to impress. "Warwick" Circa 1930 is the oldest Art Deco block of apartments in Marrickville. This wonderfully presented, warm and welcoming apartment delivers a delightful floorplan in a most desirable location. Accommodation comprises two well-appointed bedrooms (master with generous built-in), stunning period bathroom with combined shower and bath, fully equipped modern stone topped eat in kitchen and sundrenched spacious lounge room with original brick mantle. Additional features include quality new carpets, ornate plaster cornices, internal laundry (in bathroom), bright neutral colour palette and private shared rear garden with towering Palms. The location is sublime with shops, vibrant cafes, Cooks River cycleway, Dulwich Hill's light rail and train station just moments away. A truly exceptional apartment with endless period charm.

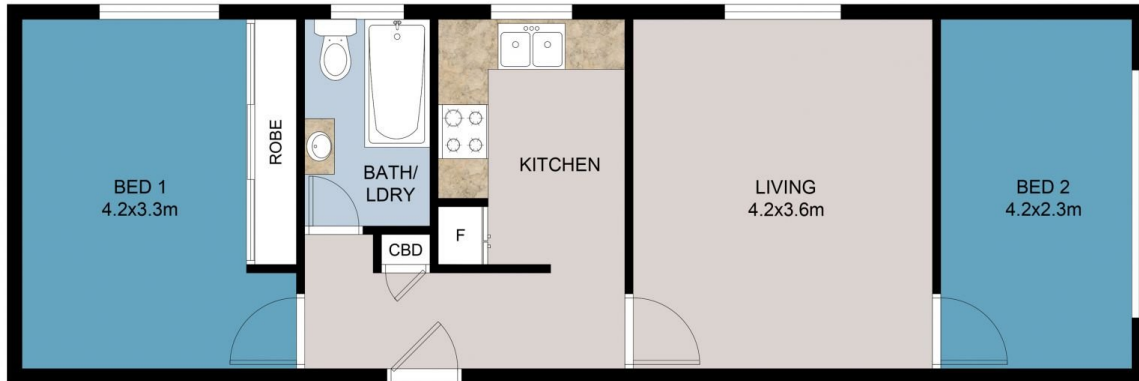
View : <https://www.planetproperties.com.au/lease/nsw/inner-west/marrickville/residential/apartment/7621264>



Rosalie Gordon
0416198261



Mark Gordon
02 9747 8888



DISCLAIMER: THIS IS FOR ILLUSTRATIVE PURPOSES ONLY.
ALL DIMENSIONS ARE APPROXIMATE AND IT DOES NOT
CONSTITUTE PART OF ANY LEGAL DOCUMENTS.

ADDRESS:

6/70 EWART STREET, MARRICKVILLE

FLOOR PLAN BY www.sosphotography.com.au