



**4/3-5 Phillips Avenue Canterbury NSW**

2 2 1

The final townhouse remaining at "Phillips on the Park", a unique collection of six limited edition luxury townhomes crafted to promote effortless living in the highly sought after and amenity rich locale of Canterbury. Architecturally inspiring with its clever use of materials, soaring ceilings and interpretation of space, this impressive townhouse offers the finest in modern living adjacent to Tasker Park and the Cooks River.

**Price** : \$ 1,300,000

**View** : <https://www.planetproperties.com.au/sale/nsw/canterburybankstown/canterbury/residential/townhouse/7993854>

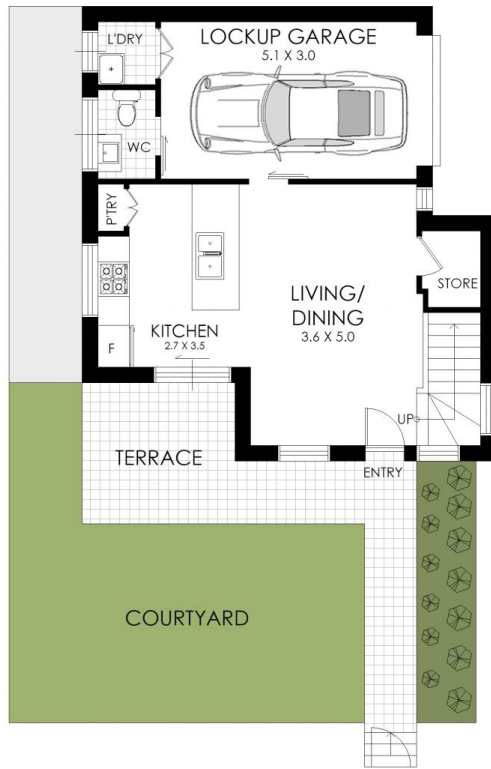
- ? Stunning open plan townhouse with breathtaking soaring ceilings
- ? Impressive fully equipped stone topped gourmet kitchen
- ? Two double bedrooms with fitted built-in robes
- ? Sundrenched dining & living leading to alfresco entertaining
- ? Two glamorous modern bathrooms with rain showers & baths
- ? Sliding glass doors leading to sundrenched low maintenance garden
- ? Engineered parquet floors & internal laundry
- ? Ducted air conditioning & solar power
- ? Architecturally designed with impeccable attention to detail



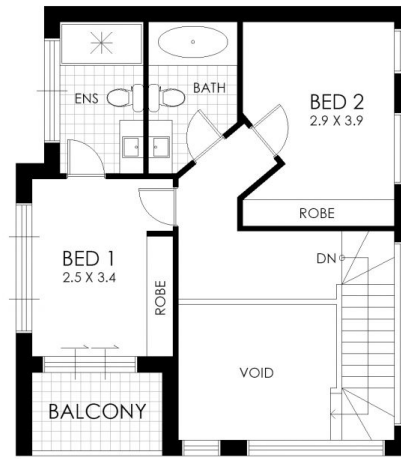
**Rosalie Gordon**  
0416198261



**Mark Gordon**  
02 9747 8888



GROUND FLOOR



FIRST FLOOR

2/3-5 Phillips Avenue, Canterbury

WARNING: DISCLAIMER This information is not to be relied upon. It is strictly used for marketing and illustration purposes only. All measurements are approximate. Not to scale. No liability accepted. You must rely on your own inquiries and seek advice from your solicitor. Floor plan by cnkplan@cnkplan.com.au/ www.cnkplan.com.au

