



610/3 Sterling Circuit Camperdown NSW

1 1 1

Set high in the prestigious 'Trio' Building, this immaculately appointed apartment offers a stylish and low maintenance home with lush leafy views. Designed by leading Architects Fender Katsalidis, it offers resort style amenities, focused on designer living and an easy indoor/outdoor style.

Price : \$ 866,000

View : <https://www.planetproperties.com.au/sale/nsw/inner-west/camperdown/residential/apartment/8004906>

- ? Open plan living dining area flowing onto the balcony with treetop views
- ? Light filled loggia-style terrace with sliding louvre shutter system
- ? Deluxe stone kitchen with gas cooking and ample storage

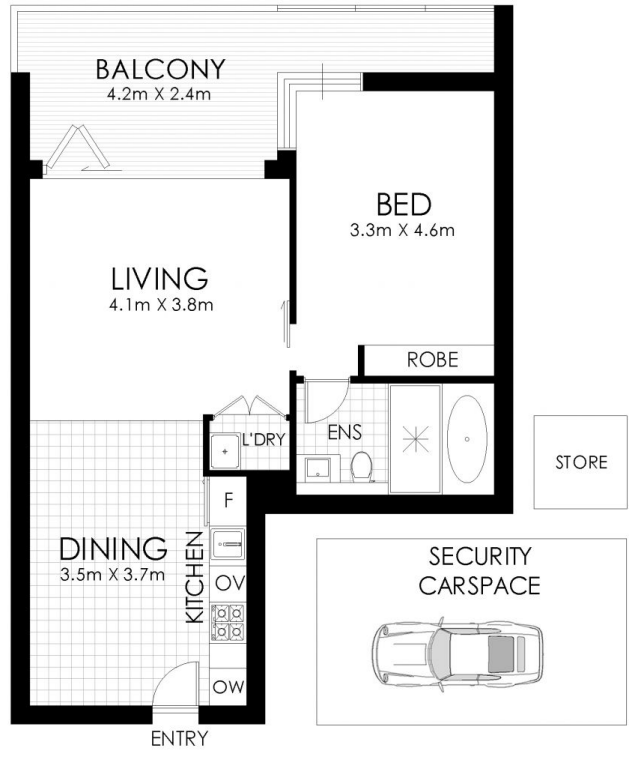


Rosalie Gordon
0416198261



Mark Gordon
02 9747 8888

- ? Spacious bedroom with built in robe
- ? Luxury bathroom with frameless glass shower
- ? Separate internal laundry & ducted air conditioning
- ? Security car space, full security building with lift access
- ? Indoor and outdoor swimming pools, gymnasiums plus onsite cafe
- ? 750 metres to Annandale village, Sydney University, RPA hospital & easy access to Sydney CBD with buses at your doorstep.



FLOOR PLAN

610/3 Sterling Circuit, Camperdown

WARNING: DISCLAIMER This information is not to be relied upon. It is strictly used for marketing and illustration purposes only. All measurements are approximate. Not to scale. No liability accepted. You must rely on your own inquiries and seek advice from your solicitor. Floor plan by cnkplan@cnkplan.com.au/ www.cnkplan.com.au

